

## CEATA REMOTE LEARNING TIMETABLE FEBRUARY 2021\*

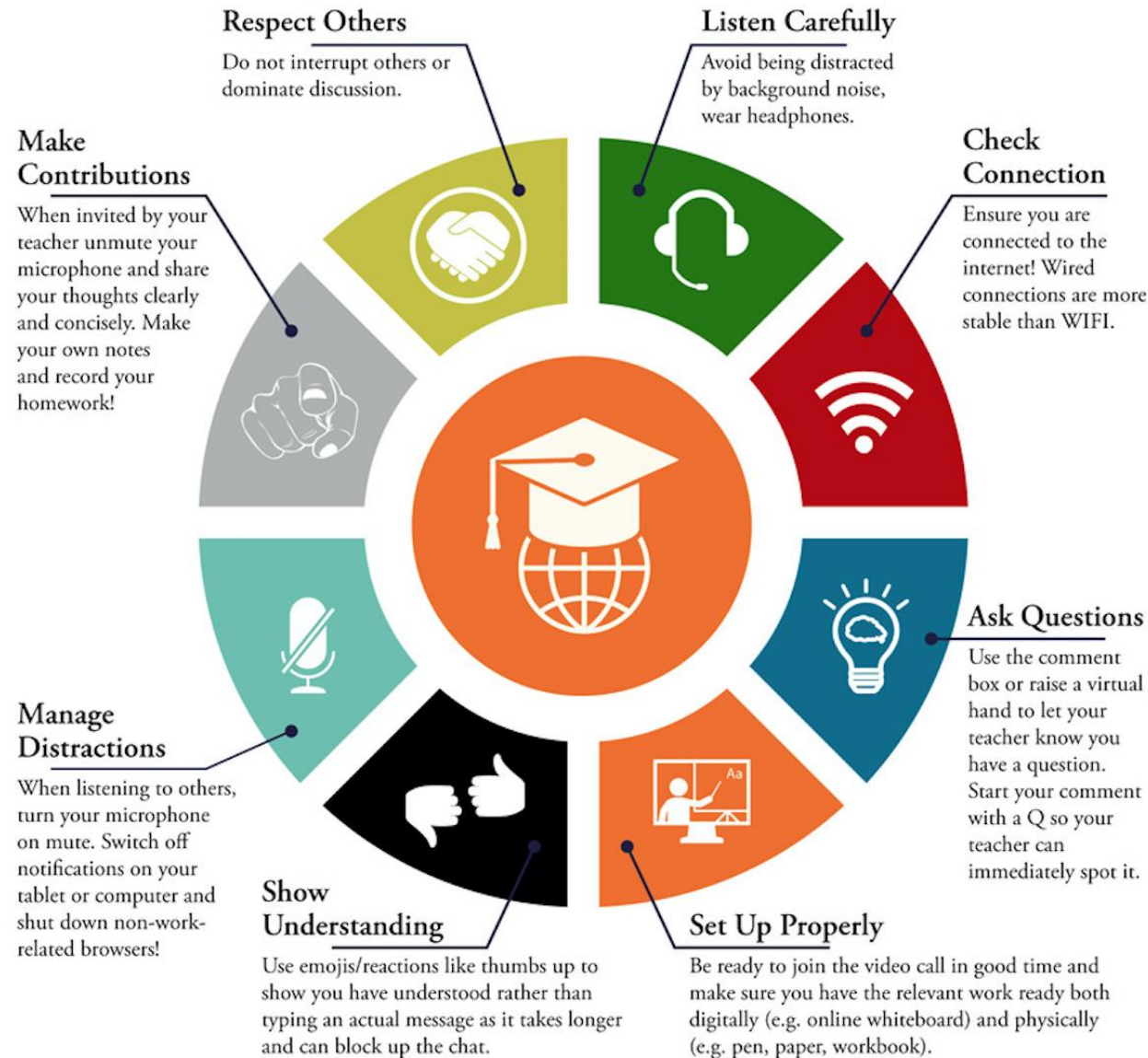


	<b>METAL FABRICATOR APPRENTICES</b>	<b>MECHANICAL ENGINEERING APPRENTICES</b>	<b>ENGINEERING OPERATIVE APPRENTICES</b>	<b>PERFORMING ENGINEERING OPERATIONS – GROUP 1</b>	<b>PERFORMING ENGINEERING OPERATIONS – GROUP 2</b>
<b>MONDAY</b>	<b>VIDEO CALL ENGINEERING WELDING THEORY</b> 1000 - 1130			<b>VIDEO CALL ENGINEERING KNOWLEDGE THEORY</b> 1300 - 1430	<b>VIDEO CALL ENGINEERING KNOWLEDGE THEORY</b> 1300 - 1430
<b>TUESDAY</b>		<b>VIDEO CALL ENGINEERING MANDATORY UNITS</b> 1000 - 1130			
<b>WEDNESDAY</b>			<b>VIDEO CALL ENGINEERING WELDING THEORY</b> 1330 - 1500	<b>WORKSHOP DEMONSTRATION</b> 1000 - 1015	<b>WORKSHOP DEMONSTRATION</b> 1000 - 1015
<b>THURSDAY</b>	<b>PERSONAL DEVELOPMENT VIDEO CALL – ALL APPRENTICES HEALTH &amp; SAFETY/PREVENT/SAFEGUARDING/E&amp;D/CAREER PLANNING/OFF THE JOB HOURS AUDIT/ONEFILE AUDIT/PREPARING FRO EPA</b> 1000 - 1030			<b>VIDEO CALL ENGINEERING KNOWLEDGE THEORY</b> 1300 - 1430	<b>VIDEO CALL ENGINEERING KNOWLEDGE THEORY</b> 1300 - 1430
<b>FRIDAY</b>				<b>WORKSHOP DEMONSTRATION</b> 1330 - 1345	<b>WORKSHOP DEMONSTRATION</b> 1330 - 1345

- Apprentices will have a weekly 1:1 call with their tutor by arrangement and must ensure OneFile records are kept up to date weekly.
- IT requirements; all remote learning sessions will be delivered via Skype, a suitable device with internet access is required.
- Remote learning will continue until CEATA is able to re-open for face-to-face learning, please make sure you attend all your sessions and 1:1 calls.
- If you need to contact us please call **0115 986 6321** or email **daleeasson@canalengineering.co.uk**

\*Timetable is subject to change in response to Covid-19 policy.

# CEATA REMOTE LEARNING TIMETABLE FEBRUARY 2021\*



\*Timetable is subject to